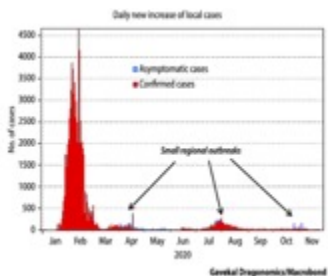
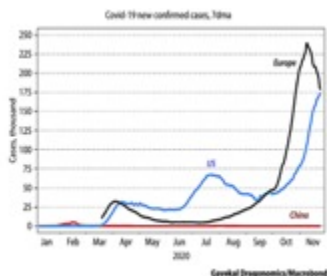


Annual report to the Trustees about the foundation's activities during the calendar year 2020

The Corona pandemic that started in late 2019 in Wuhan had a devastating impact on China's economy and the Chinese people, starting in Central China and expanded rapidly all over the country. With extreme measures the authorities succeeded to get the spreading of the virus under control. As a consequence travel to China and within the country came practically to complete halt. Erwin, who visited Qinghai in late November 2019 was not allowed to return to China in 2020, due to the strict travel restrictions to and within China.



The contacts with the Education authorities and the students had, therefore, to be shifted to the digital world. WeChat, phone calls, zoom and emails have proven very useful in continuing the Foundation's activities. The continuous digital contacts allowed Erwin to be in touch with education officials, teachers and students twice a week on an average. The activities were less than in past years. But the foundation succeeded, nonetheless, to finance three more moving nomad schools in 2020, to finance the renovation of the storage room at the village school in the district of *Tongren*, to distribute a noticeable number of e-books, and last but not least, to grant almost 100 scholarships to needy nomad students.

Moreover, Erwin's loyal butler, Xiao Song, continued to help on the ground, although he has retired from the Foreign Ministry's Service Bureau in November 2019. He visited the highlands and Tongren twice in 2020. Most photos in this brief update have been shot by him or by the head of the *Education Bureau of Zeku*.

The many students as well as the Education authorities are joining us to express heartfelt thanks to you, Trustees of the *Amici-di-Qinghai*, for continuing supporting the education activities in the *Huangnan* prefecture, the highlands of *Zeku* at present in particular, and this despite the fact that the Corona epidemic is raging also in Switzerland.

Though the future does not look particularly encouraging, the loyal Ox has a long tradition of being tenacious and diligent, but also benevolent.

Yours truly and gratefully

Yolanda and Erwin

early late April 2021



The costs of the projects 2020

4001 - School projects					
1. Zhigenmu-Heri					
23/03/2020	Heri Town, Zhigenmu Schulprojekt	1010 · UBS 235-49836...	26,500.00		26,500.00
Total 1. Zhigenmu-Heri			26,500.00		26,500.00
2. Hongheng					
26/06/2020	Hongcheng Nomadenschule	1010 · UBS 235-49836...	26,500.00		26,500.00
Total 2. Hongheng			26,500.00		26,500.00
3. Ningxiu					
31/08/2020	Tangde-Xialaduo Nomadenschule, Equi...	1010 · UBS 235-49836...	26,500.00		26,500.00
Total 3. Ningxiu			26,500.00		26,500.00
5 - Quma school, Tongren					
16/10/2020	UBS/ Quma renovation electricity	1010 · UBS 235-49836...	3,420.00		3,420.00
Total 5 - Quma school, Tongren			3,420.00		3,420.00
Total 4001 - School projects			82,920.00		82,920.00
4002 - Scholarships					
31/08/2020	Jicang, Stipendien 20-21	1010 · UBS 235-49836...	2,630.00		2,630.00
07/09/2020	Quma, Stipendien 2020-21	1010 · UBS 235-49836...	2,010.00		4,640.00
07/09/2020	Huanquhu, Stipendien 2020-21	1010 · UBS 235-49836...	2,680.00		7,320.00
07/09/2020	Zeku Stipendien 2020-21	1010 · UBS 235-49836...	8,345.00		15,665.00
Total 4002 - Scholarships			15,665.00		15,665.00
4003 - e-books					
02/11/2020	Zeku/30 E-Books	1010 · UBS 235-49836...	2,120.00		2,120.00
22/11/2020	Jicang/ E-books	1051 · Erwin Schurten...	1,430.00		3,550.00
Total 4003 - e-books			3,550.00		3,550.00
Total 4000 - Supporting projects			102,135.00		102,135.00

Three additional moving nomad schools on the highlands of Zeku

Yangqi-Zhigenmu

This new moving nomad school is located at 30 to 40 km East of the district city of *Heri*, at an altitude of 3600 m above sea on an average, with a total population of around 2747, including children. The remote mountain area deserved by this new school is on a very large and very sparsely populated grassland. A total of 61 students are now getting basic education, at four different teaching sites. The project has been fully financed from the accumulated funds of the foundation.



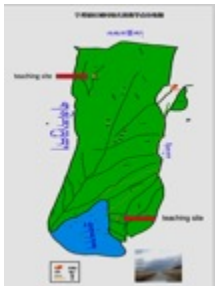
Tangde-Xiala

This new moving nomad school is located 50 km West of Zeku and 25 km Southwest of Heri township and deserving the children of two villages, *Tangde* with a population of 1786 people and *Xiala* with a population of 1078 people. The education is given at three teaching sites: Tangde for 17 children, Angcang for 9, and Xiala for 9 children. A total of 35 pre-school-age children are now getting regular pre-school education. The herdsmen of the Tangde village and the Xiala village who are living scattered in a very sparsely populated region with extremely cold winter months and gusty winds, highly appreciate the new moving school. Moreover, the natural roads are muddy or sandy making transportation difficult.



Hongcheng-Ningxiu

The remote mountain area of *Hongcheng* is also large, sparsely populated by 1850 people and at an altitude of 3700 m on an average. The 3-4 winter months are extremely cold with gusty wind and temperatures below 30° C. at an altitude of 3600 m above sea. - The nomad village of *Hongcheng* is the most remote from the office that is supervising the teaching. The *Hongcheng* moving nomad school is teaching at two sites: - *Zhigeduo* with 23 students is located at 55 km southwest of Ningxiu, and – *Haojie* with 16 students is located at 10 km south of Ningxiu. There are, therefore, totally 39 children at the two teaching points at present.



e-books

The "electronic device» is teaching the students basic reading, writing, arithmetic, history, geography, and more. The language can be set to Northern Tibetan, Chinese or English. As soon as a word is pressed with the stylus, it sounds in the selected language. The children understand the logic of self-teaching with incredible speed. A total of more than 800 copies have been distributed so far.



Quma primary school: 10 (two to primary students, and to eight middle school students), financed by Mr. Guido Cherubini out of his four-year program 2019-2023): Rmb 14,000 or CHF 2,010.



青海省同仁市年都乎乡曲玛村贫困生花名册
College Students from Qinghai Huangnan Tongren Quma Village

姓名	性别	民族	学校名称	家长	联系电话	金额	姓名	备注
仁青措毛	女	藏族	青海师大	仁青志	18009735918	1500		
万玛措毛	女	藏族	青海民院	罗果	15609733168	1500		
万德尖措	男	藏族	青海交通学校	英保	15909735335	1500		
藏其羊巴	男	藏族	青海民院	扎西卡	1572233232	1500		
叶卓措	女	藏族	青海交通学校	仁青措	13119730718	1500		
仁青加卜	男	藏族	青海师大	卓杰才让	13309739108	1500		
那毛卓玛	女	藏族	青海大学	卓杰	13119731556	1500		
那杰吉	女	藏族	青海大学	黑白	13119731550	1500		
旦正卓吉	男	藏族	青海民院	才德昌	13299732053	1500		
当措卓吉	男	藏族	思源学校	曾却才让	18097030587	1500		
合计 Total						15000		

Huanquhu: Nomad school at over 3800 meters above sea level: 20 scholarships: RMB 20'000 or CHF 2'680.



JiCang: Mountain farming village: 17 (6 x 1500 and 11 x 1000): RMB 20'000 or CHF 2'680.

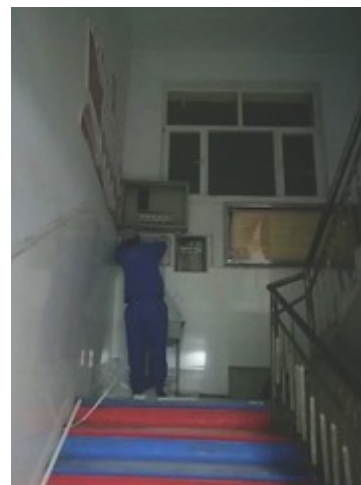
Financed by Mrs. Hanna Anderson-Kaufmann



Quma Primary School: renewal of the electrification

The *Amici* had financed the construction of the *Quma Primary School* in 2003, in memory of two young Swiss who died in a car accident. Since then, the Foundation supported repeatedly the modernisation and enlargement of the school (Kindergarten, computer room, new kitchen, storage room, et al). In addition, an annual scholarship program for needy students from the village has been in place for several years.

In reply to a request by the administrator of the school and the village elders the *Amici* agreed to finance the renovation of the entire electricity supply system (power cables, plugs and distribution points) that had deteriorated to a dangerous state. The budget amounted to RMB 24,195 or CHF 3,420. The project was carried out in August 2020 to the satisfaction of the Electrical Bureau of Tongren, the villagers and the school administrator.



**WE are the HEAVEN,
everything else is secondary**

